

Trade and Investment Ties: From the Korean Perspective

Park Bun Soon

Senior Fellow
Samsung Economic Research Institute

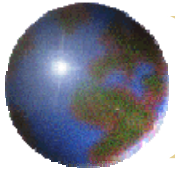
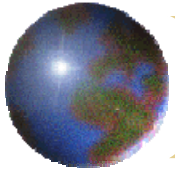
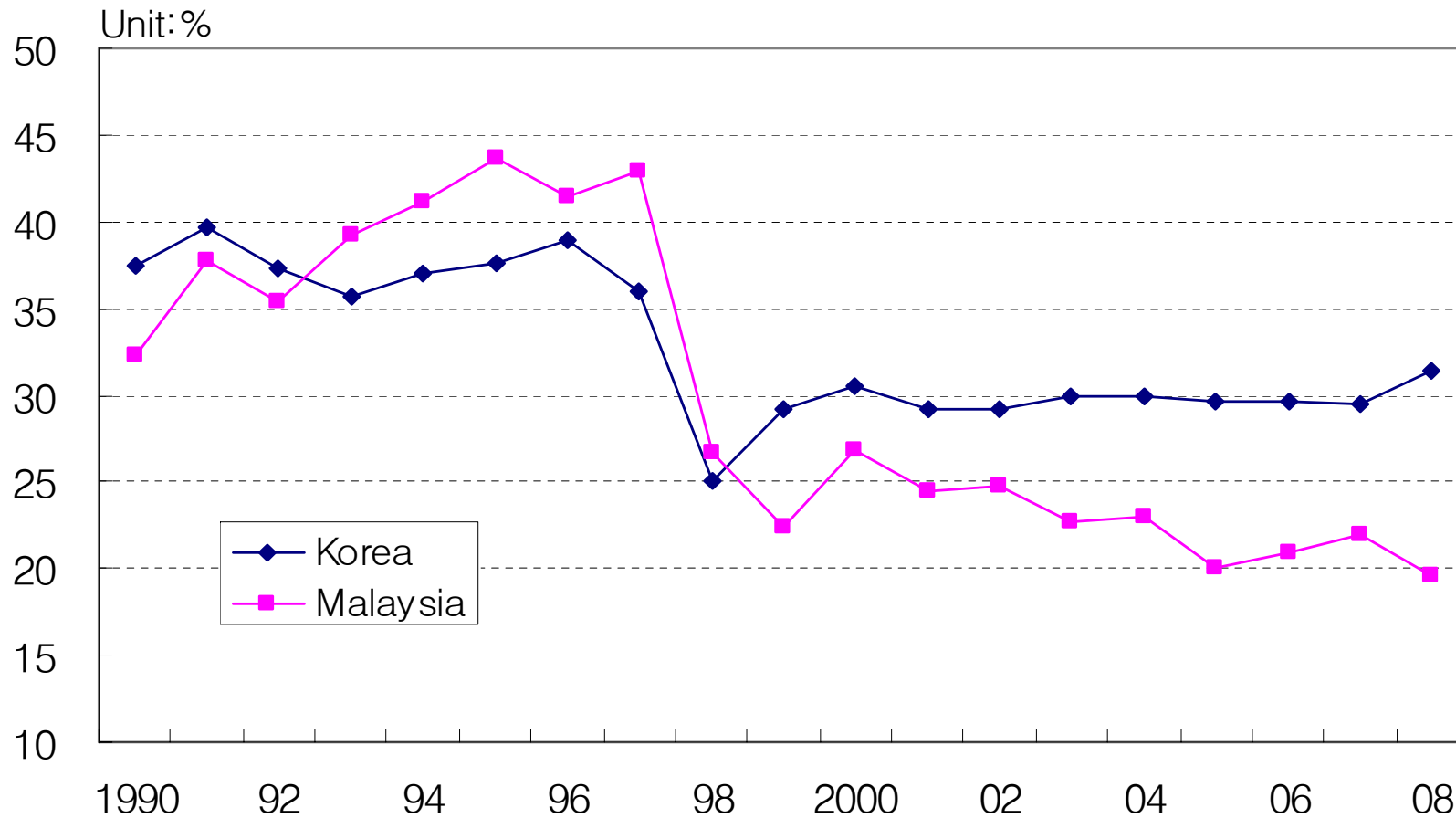


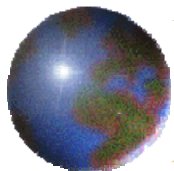
Fig. 1: Economic growth rates



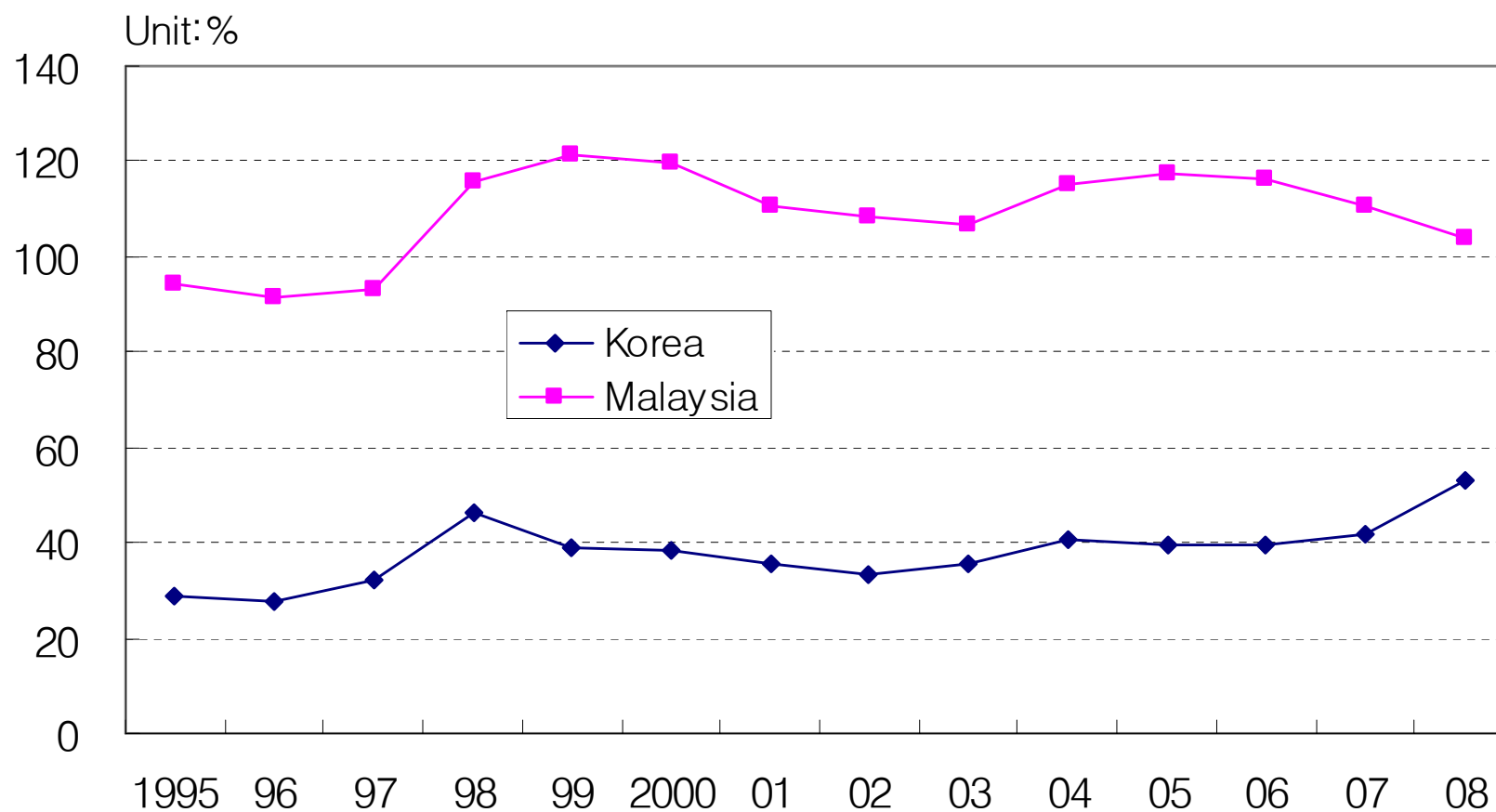


*Fig. 2: Gross fixed capital formation
(% of GDP)*





*Fig. 3: Exports of goods and services
(% of GDP)*



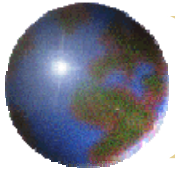
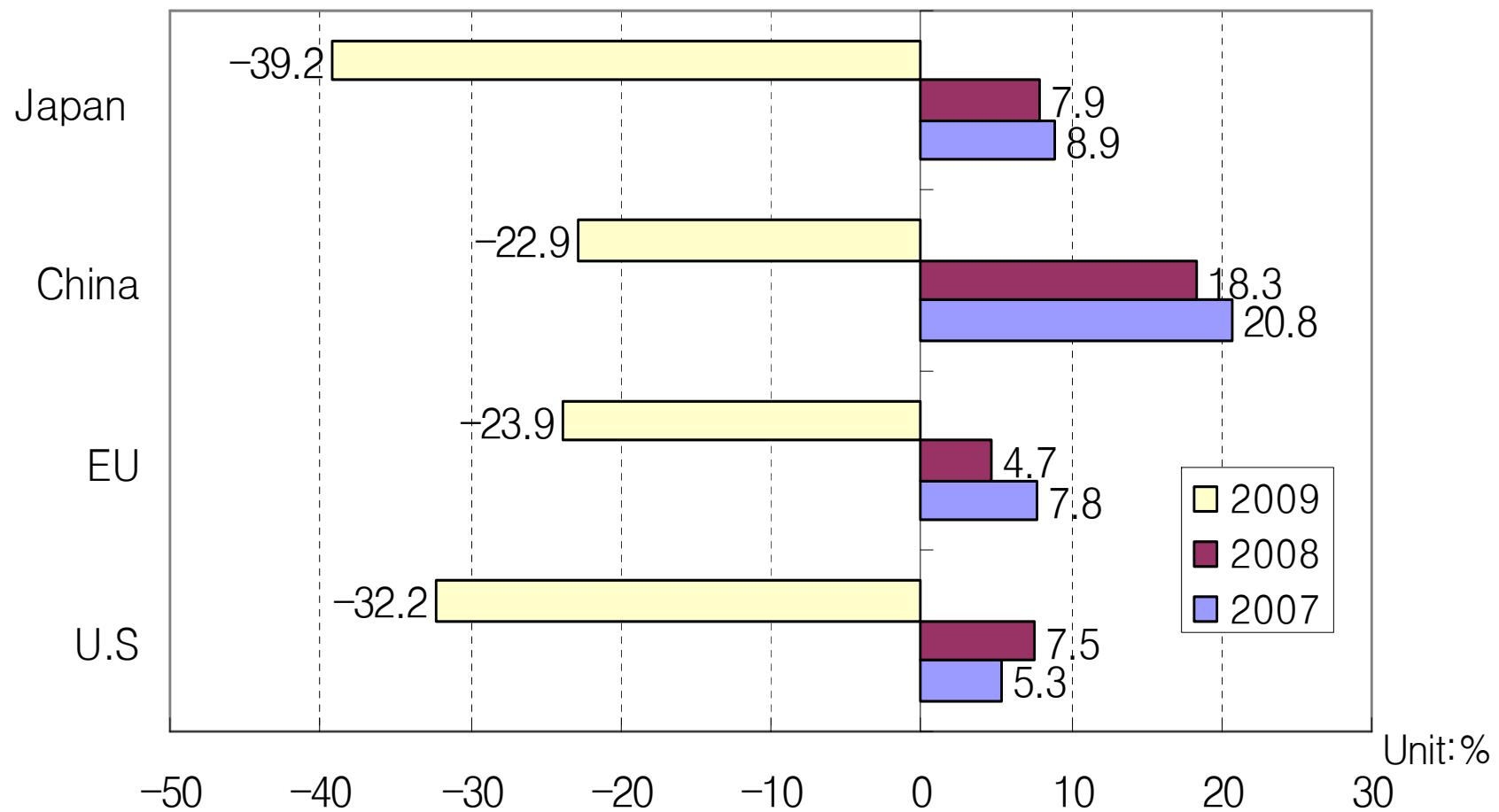
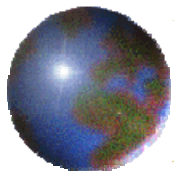
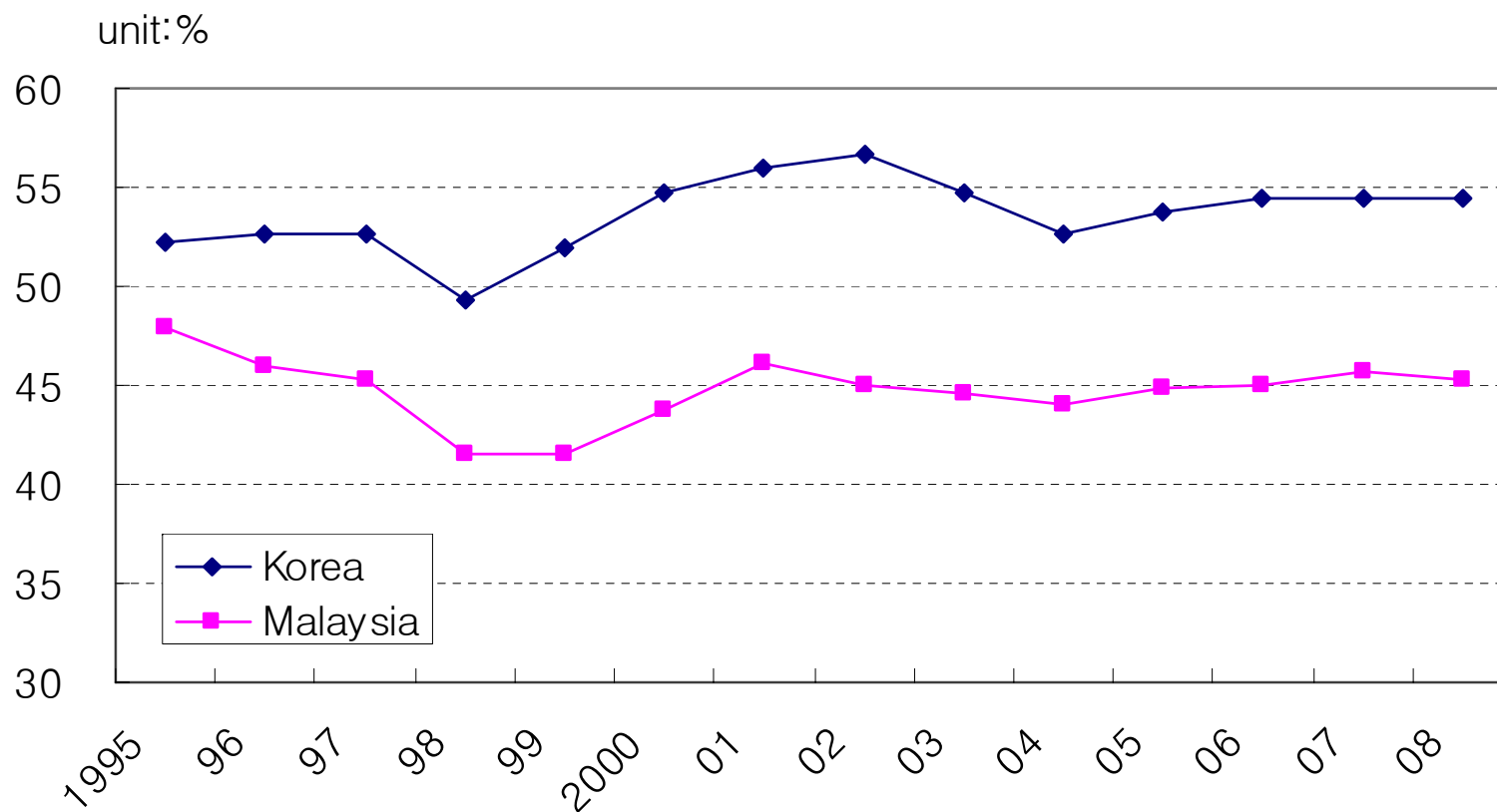


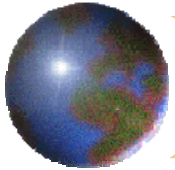
Fig. 4: Imports growth rates



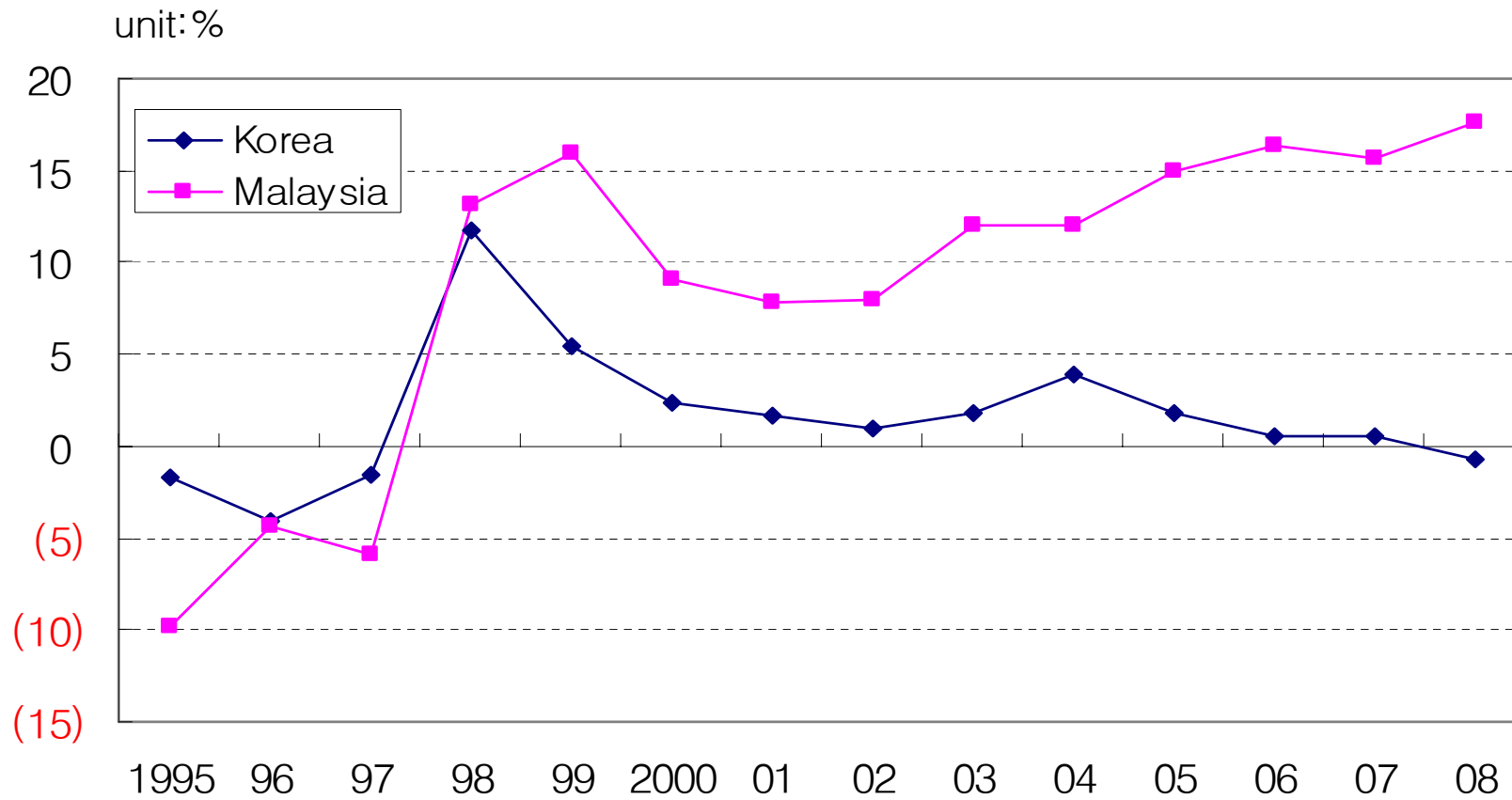


*Fig. 5: Private consumption expenditure
(% of GDP)*





*Fig. 6: Current account balance
(% of GDP)*



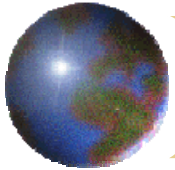
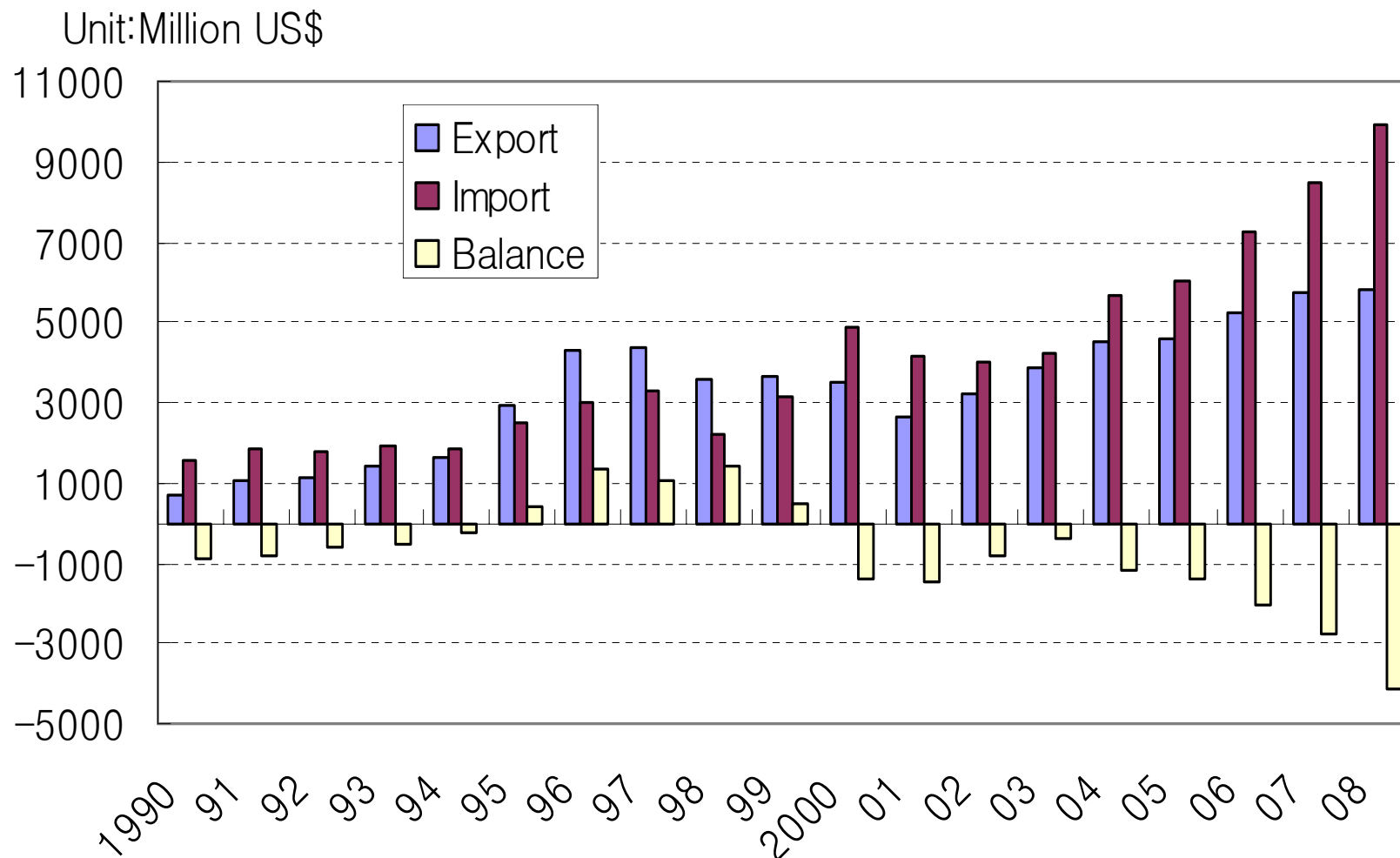


Fig. 7: Korea's trade with Malaysia



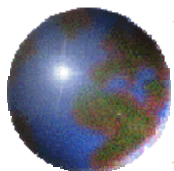


Table 1: Share of Korea's trade with selected Asian economies (%)

	Export				Import			
	1997	2000	2005	2008	1997	2000	2005	2008
Malaysia	3.2	2.0	1.6	1.4	2.3	3.0	2.3	2.3
China	10.0	10.7	21.8	21.7	7.0	8.0	14.8	17.8
Singapore	4.3	3.3	2.6	3.9	1.7	2.3	2.0	1.9
Thailand	1.6	1.2	1.2	1.4	0.9	1.0	1.0	1.0
Indonesia	2.6	2.0	1.8	1.9	2.8	3.3	3.1	2.6
Vietnam	1.2	1.0	1.2	1.8	0.2	0.2	0.3	0.5

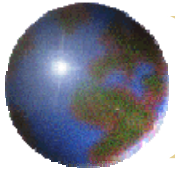
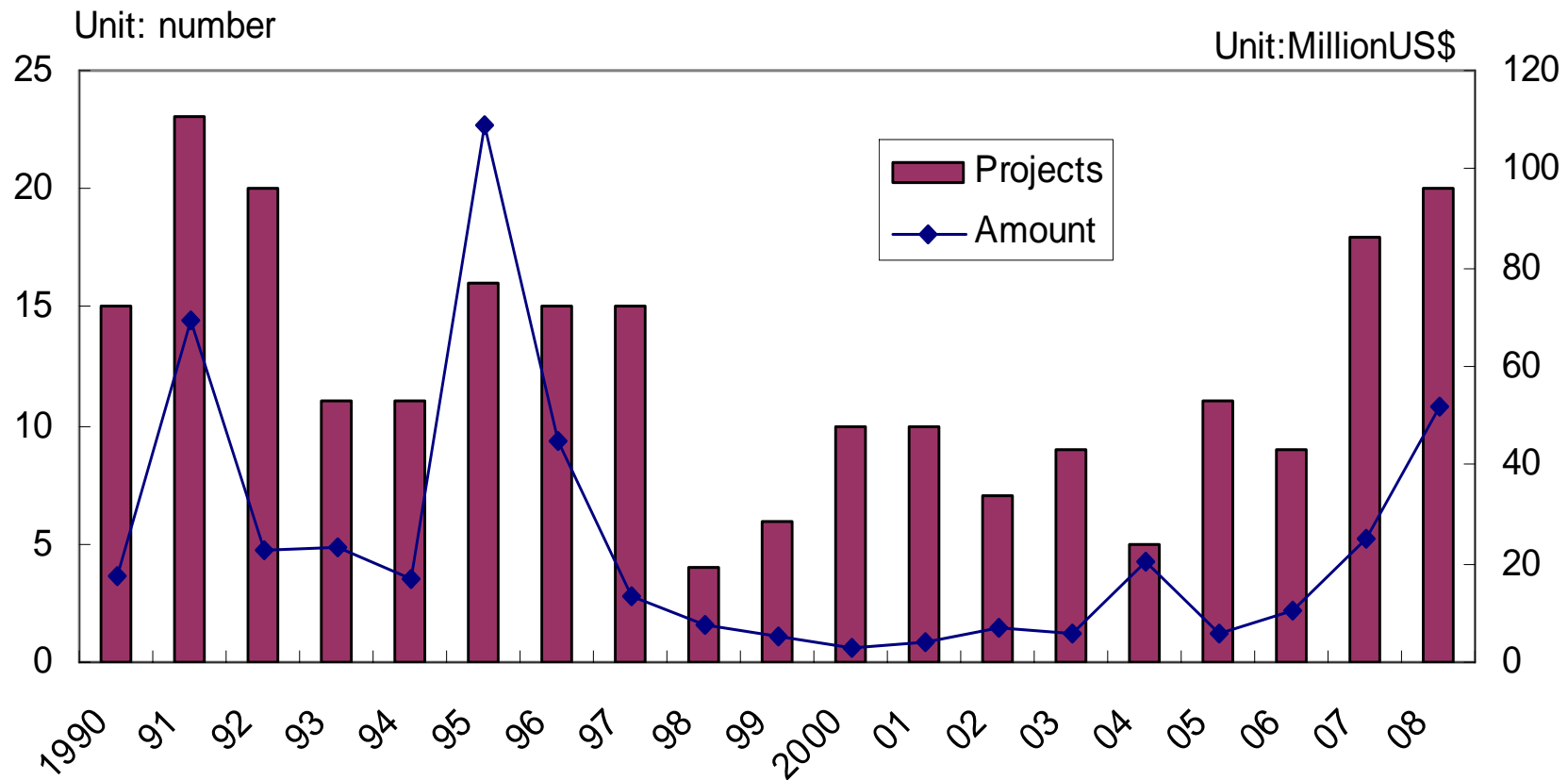


Fig. 8: Korea's investment in the Malaysian manufacturing sector



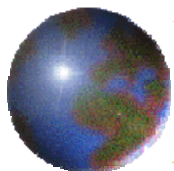


Table 2: Korea's investment in selected Asian economies

	Number of projects					
	2000	2002	2004	2006	2007	2008
Malaysia	20	23	22	37	62	40
Indonesia	54	57	52	122	126	137
China	777	1,389	2,145	2,299	2,119	1,285
Vietnam	28	100	112	277	408	292
Thailand	17	31	43	62	62	50
Philippines	29	37	33	111	135	104
World	2,097	2,510	3,789	5,216	5,681	3,990
	Amount (million US\$)					
	2000	2002	2004	2006	2007	2008
Malaysia	33.7	62.3	60.8	51.1	158.5	325.7
Indonesia	95.4	72.6	57.1	147.6	253.0	525.8
China	732.1	1,062.2	2,335.8	3,378.6	5,248.7	3,746.2
Vietnam	70.9	153.5	177.2	587.1	1,307.3	1,330.7
Thailand	32.7	34.2	46.1	74.2	141.7	87.6
Philippines	144.6	26.9	19.2	60.9	108.1	182.1
World	5,183.2	3,962.4	6,391.6	11,479.6	21,405.0	21,678.7